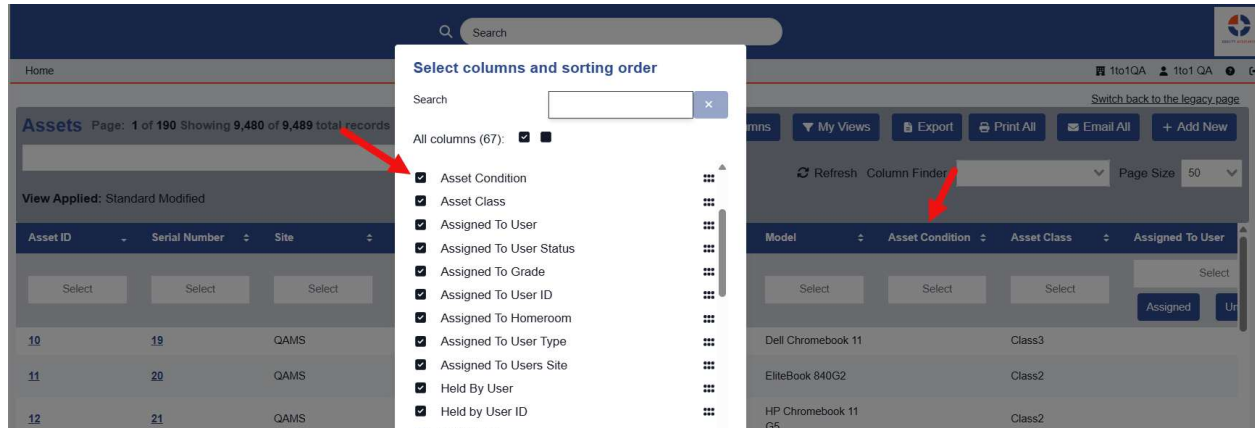


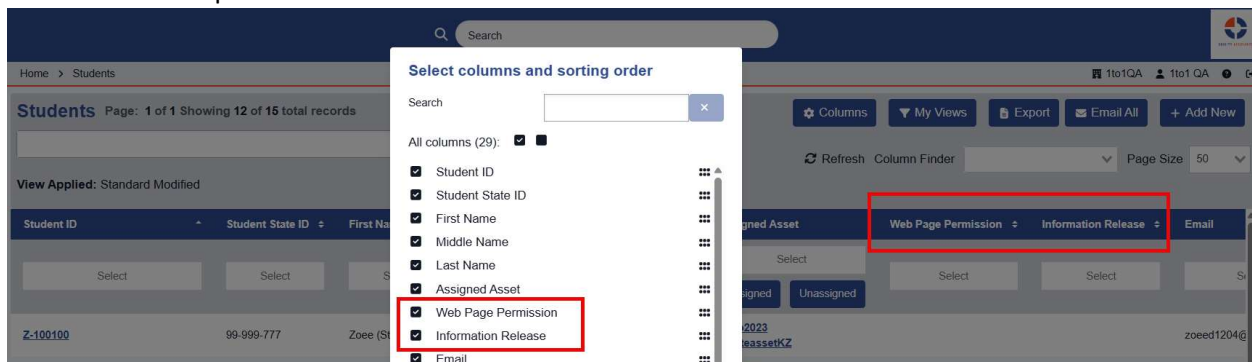
Assets

- **Manage** – Asset Condition has now been added to the manage page. In order to see this on the manage page, you will need to select the option on the Columns button.



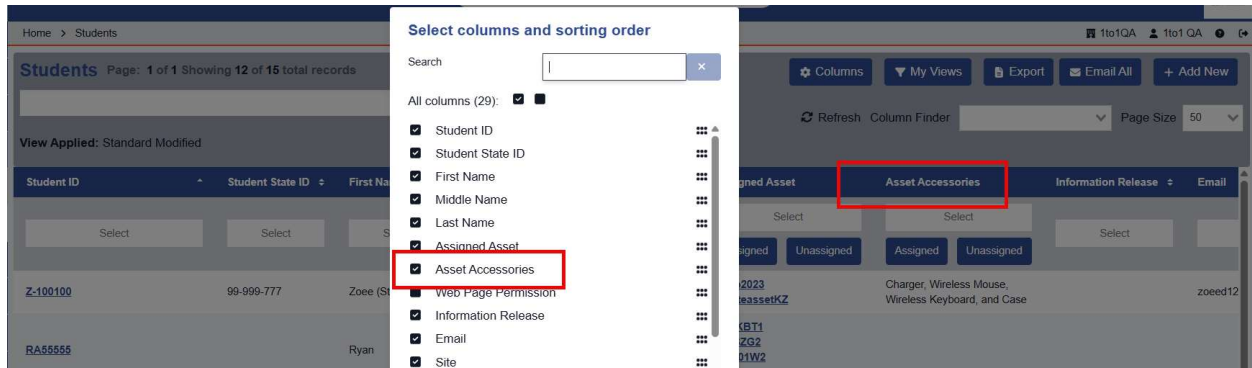
Students/Staff

- **Manage** –
 - All user roles (except Students), now can download the files saved under the “Files” section of Edit.
 - Information Release and Web Page Permissions have now been added to the Student Manage page. In order to see this on the manage page, you will need to select the option on the Columns button.



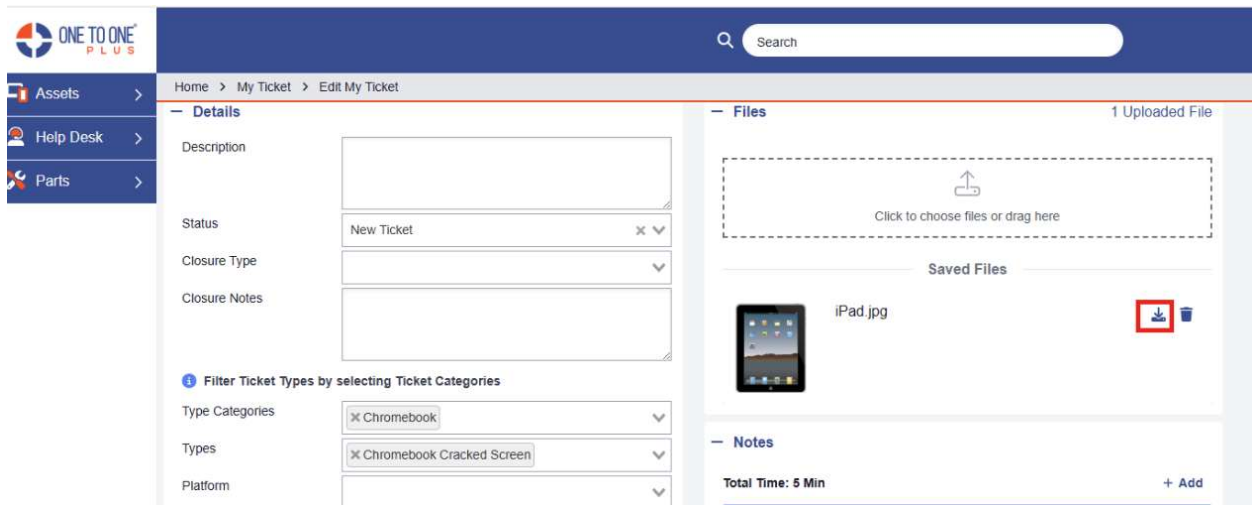
Release 9.4.0

- Asset Accessories have now been added to the Student and Staff Manage page. In order to see this on the manage page, you will need to select the option on the Columns button



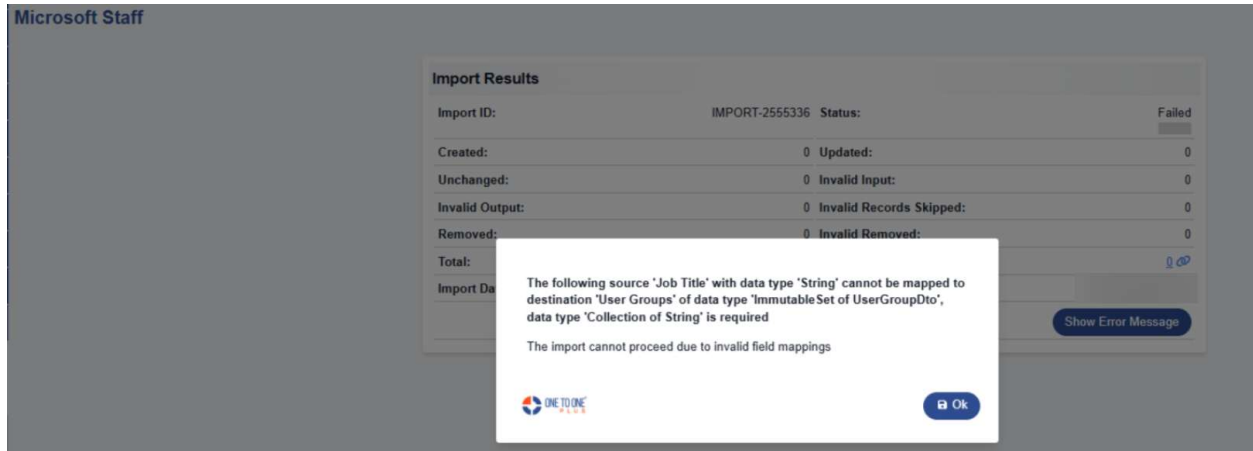
Help Desk

- **My Ticket** – All user roles (except Students), now can now download the files saved under the “Files” section of Edit Tickets.



Imports

- **Microsoft Staff** – In some cases, imports would fail due to invalid field mappings for user groups. This issue has now been resolved.



- **FTP Student** – In some cases, a “Non-skippable exception during read” error occurred, causing the import to fail. This issue has now been resolved.

